

BASIC DETAILS

SCHOOL NAME	BABA ISHER SINGH(N) PUBLIC SCHOOL AMRITSAR PB
ADDRESS	BABA ISHER SINGH(N) PUBLIC SCHOOL BLOCK RANJIT AVENUE,
PRINCIPAL	MRS NISHA CHABA
PRINCIPAL'S EMAIL ID	bisnpss@yahoo.in
SCHOOL'S CONTACT NUMBER	0183-2501705
SCHOOL'S WEBSITE	babaishersinghnanaksarpublicschool
LANDMARK NEAR SCHOOL	Guru Nanak Prakash Gurudwara
AFFILIATION VALIDITY	2017 TO 2022
NAME OF THE TRUST/SOCIETY/COMPANY REGISTERED WITH	Baba Isher Singh (Nanaksar) Charitat Education
SOCIETY REGISTRATION NUMBER	1/1984-85
NOC ISSUING AUTHORITY	Punjab Government
NO OBJECTION CERTIFICATE	VIEW (PdfHandler.aspx? FileName=noc/20541.PDF)
WHETHER SCHOOL IS RUNNING MORNING/ EVENING/ DOUBLE SHIFT?	Morning
WHETHER OFFERED VOCATIONAL/SKILL SUBJECTS?	Yes

SCHOOL CODE 20541

D- AFFILIATION CODE 1630555

PRINCIPAL'S CONTACT NUMBER 9876145121

PRINCIPAL'S RETIREMENT DATE 19/06/2029

SCHOOL'S EMAIL ID bisnpss@yahoo.in

so.in SCHOOL'S FAX NUMBER 01614628252

YEAR OF ESTABLISHMENT 1993

AFFILIATION STATUS PROVISIONAL

e REGISTRATION DATE 30/10/2013

REGISTRATION VALIDITY PERMANENT REGISTRAT

NOC ISSUING DATE 27/06/2008

NON PROPRIETARY CHARACTER VIEW (pdfHandler.as
AFFIDAVIT/NON PROFIT COMPANY AFFIDAVIT FileName=affidavit

CURRENTLY RUNNING CLASSES FROM 1

EXAMINATION CENTER NUMBER, IF ANY 0

FACULTY DETAILS

TOTAL NUMBER OF TEACHERS (ALL CLASSES)

NUMBER OF TGTS

NUMBER OF PETS

NUMBER OF MANDATORY TRAINING QUALIFIED TEACHERS

WHETHER SPECIAL EDUCATOR APPOINTED?

**HAS MANDATORY TRAINING OF TEACHERS AS PER THE TRAINING POLICY (SECTION
(http://cbseaff.nic.in/cbse_aff/attachment/online-services/affiliation-Bye-Laws.pk**

26 NUMBER OF PGTs

8 NUMBER OF PRTs

1 OTHER NON-TEACHING STAFF

26 NUMBER OF TRAININGS
ATTENDED BY FACULTY SINCE
LAST YEAR

NO WHETHER COUNSELLOR AND
WELLNESS TEACHER
APPOINTED?

-16 OF AFFILIATION BYE-LAWS)
f) BEEN COMPLETED? YES NUMBER OF NTTs

STUDENT DETAILS

CLASS	TOTAL NUMBER OF SECTIONS	TOT
1	1	40
2	1	40
3	1	40
4	1	40
5	1	40
6	1	40
7	1	40
8	1	40
9	1	40
10	1	40
11	1	40
12	1	40

HL PER CLASS INTAKE

TOTAL NUMBER OF STUDENTS

25	25
22	27
18	18
15	30
20	20
25	21
21	27
18	10
10	26
10	

ACADEMIC DETAILS

SUBJECTS OFFERED FOR CLASS 10

- 087---SOCIAL SCIENCE
- 085---HINDI COURSE-B
- 184---ENGLISH LANG & LIT.
- 402---INFORMATION TECHNOLOGY
- 241---MATHEMATICS BASIC
- 004---PUNJABI
- 041---MATHEMATICS
- 086---SCIENCE

A

H
(t

SUBJECTS OFFERED FOR CLASS 12

055---ACCOUNTANCY

044---BIOLOGY

054---BUSINESS STUDIES

043---CHEMISTRY

048---PHYSICAL EDUCATION

030---ECONOMICS

041---MATHEMATICS

042---PHYSICS

301---ENGLISH CORE

802---INFORMATION TECHNOLOGY

L AMRITSAR

INFRASTRUCTURE DETAILS

TOTAL NUMBER OF SITES OF SCHOOL	1
TOTAL AREA OF SCHOOL IN SQUARE METRES	22662
TOTAL AREA OF PLAYGROUND IN SQUARE METRES	20092
TOTAL NUMBER OF SMALL-SIZED ROOMS	8
TOTAL NUMBER OF LARGE-SIZED ROOMS	22
TOTAL NUMBER OF FEMALE REST ROOM	0
NUMBER OF BOYS TOILET	9
NUMBER OF WASHROOMS FOR FEMALE STAFF	3
TOTAL NUMBER OF LIBRARIES	1
TOTAL NUMBER OF STUDENT CANTEENS	1
NUMBER OF WATER PURIFIERS/ROs	2
NUMBER OF LIFTS/ELEVATORS	0
DOES THE SCHOOL HAVE HOSTEL FACILITY	NO
DOES THE SCHOOL HAVE FIRE EXTINGUISHERS	YES

TOTAL NUMBER OF BUILDING BLOCKS	1
TOTAL NUMBER OF PLAYGROUNDS	5
TOTAL NUMBER OF ROOMS	35
TOTAL NUMBER OF MEDIUM-SIZED ROOMS	5
TOTAL NUMBER OF MALE REST ROOM	0
NUMBER OF GIRLS TOILET	6
NUMBER OF TOILETS FOR DIFFERENTLY ABLED PERSONS	0
NUMBER OF WASHROOMS FOR MALE STAFF	0
NUMBER OF LABORATORIES	5
TOTAL NUMBER OF STAFF CANTEENS	1
NUMBER OF AUDITORIUMS	0
NUMBER OF DIGITAL CLASSROOMS	3
DOES THE SCHOOL HAVE GUARDS EMPLOYED FOR SAFETY	YES
DOES THE SCHOOL HAVE SPRINKLERS	NO

DOES THE SCHOOL HAVE CCTV CAMERAS INSTALLED? YES

TOTAL NUMBER OF COMPUTERS IN ALL COMPUTER LAB 15

DOES THE SCHOOL HAVE A BOUNDARY WALL? YES

DOES THE SCHOOL HAVE CLINIC FACILITY? YES

DOES THE SCHOOL HAVE A GYMNASIUM? NO

PROVISION OF WEB BASED LEARNING PROGRAMS? NO

DOES THE SCHOOL HAVE SPORTS FACILITY? YES

DOES THE SCHOOL HAVE A SWIMMING POOL? NO

TOTAL NUMBER OF BUSES OWNED 0

TOTAL NUMBER OF VANS/MATADORS 0

NUMBER OF FEMALE ATTENDANTS FOR BUS DUTY 0

NAME OF TRANSPORT COORDINATOR NA

BUILDING SAFETY CERTIFICATE [VIEW \(PdfHandl](#)
[FileName=build](#)

ARE THE HEALTH AND HYGIENE, TOILETS ON ALL FLOORS,
SEPARATE TOILETS FOR STAFF, RAMPS, SIGNBOARDS, ETC.
BEING MAINTAINED PROPERLY? YES

IS THE SCHOOL EXAMINATION CENTER OF CBSE? NO

DOES THE SCHOOL HAVE WEB SERVERS NO

IS YOUR SCHOOL BARRIER FREE/HAS RAMPS? YES

DOES THE SCHOOL HAVE A STRONG ROOM? NO

IS YOUR SCHOOL WI-FI ENABLED? YES

DOES THE SCHOOL HAVE FIRE ALARMS? NO

DOES THE SCHOOL HAVE INDOOR GAMES FACILITY? YES

DOES THE SCHOOL HAVE DANCE/MUSIC FACILITY? YES

TOTAL NUMBER OF BUSES HIRED 0

TOTAL NUMBER OF DRIVERS 0

NUMBER OF ACTIVITY ROOMS 3

TRANSPORT COORDINATOR CONTACT 0

r.aspx? [VIEW \(pdfHandler.aspx? FileName=transport/20541.pdf\)](#)

IS THE SCHOOL INFRASTRUCTURE BEING USED FOR ANY COMMERCIAL ACTIVITY? NO

OTHER DETAILS

TOTAL BOOKS AVAILABLE IN THE SCHOOL LIBRARY	2750
DAILIES IN THE SCHOOL LIBRARY	3
LIBRARY RESOURCES	3550
LIBRARY SIZE (IN SQ. METERS)	47
COMPOSITE SCIENCE LAB SIZE (IN SQ. METERS)	0
PHYSICS LAB SIZE (IN SQ. METERS)	47
DOES IT HAVE LIBRARY INTERNET	NO
WHETHER SCHOOL HAS SINGLE CONTIGUOUS PLOT ?	Yes
DISTANCE BETWEEN TWO SITES OF THE SCHOOL	0
BIOLOGY LAB SIZE (IN SQ. METERS)	47
CERTIFYING THAT NO OTHER INSTITUTION (APART FROM SCHOOL) IS RUNNING IN THE CLAIMED LAND AREA	Ye
HOW MANY ROOMS LESS THAN 400 SQ FT	8

PERIODICALS IN THE SCHOOL LIBRARY 2

REFERENCE BOOKS IN THE SCHOOL LIBRARY 800

DOES IT HAVE LIBRARY SOFTWARE No

COMPUTER LAB SIZE (IN SQ. METERS) 47

CHEMISTRY LAB SIZE (IN SQ. METERS) 47

HOW MANY ROOMS BETWEEN 400 to 500 SQ FT 5

TOTAL NUMBER OF LABORATORY 5

SCHOOL SITE (TEMPORARY / PERMANENT) PERMANENT

PURPOSE FOR TWO SITES OF THE SCHOOL 0

MATHEMATICS LAB SIZE (IN SQ. METERS) 47

THE SCHOOL WILL NOT RUN ANY BRANCH IN THE PREVIOUS PLOT WITH SAME AFFILIATION NO Yes

HOW MANY ROOMS GREATER THAN 500 SQ FT 22

DETAILS

ATIONALISED BANK	Canara Bank
BUS STATION	Madan Lal Dhingra interstate Bus terminal
RAILWAY STATION	Amritsar Junction
T AIRPORT	Sri Guru Ram Dass Jee International Airpor
ST HOSPITAL	Hartel hospital
EST POLICE STATION	Gumtala Police station
REST METRO STATION	

DISTANCE OF BANK FROM SCHOOL IN KM	1
DISTANCE OF BUS TERMINAL FROM SCHOOL IN KM	8
DISTANCE OF RAILWAY STATION FROM SCHOOL IN KM	6
DISTANCE OF AIRPORT FROM SCHOOL IN KM	4
DISTANCE OF HOSPITAL FROM SCHOOL IN KM	1.25
DISTANCE OF POLICE STATION FROM SCHOOL IN KM	1
DISTANCE OF METRO FROM SCHOOL IN KM	

CONTRIBUTION TOWARDS ENVIRONMENT PROTECTION

- WHETHER RAIN WATER HARVESTING HAS BEEN DONE IN THE CAMPUS? NO
- WHETHER HARVESTED WATER IS RECYCLED FOR GARDENING, ETC? NO
- WHETHER SEGREGATION OF WASTE IS DONE AT SOURCE? NO
- WHETHER WASTE PAPER IS RECYCLED? NO
- WHETHER THERE IS PROPER DISPOSAL OF SOLID WASTE? YES
- WHETHER SCHOOL IS USING ENERGY SAVING AND ENERGY EFFICIENT ELECTRICAL EQUIPMENT? YES
- WHETHER DRIP IRRIGATION IS THE ONLY MEANS OF WATERING THE GARDEN? YES
- WHETHER WASTE WATER FROM RO PLANT FOR DRINKING WATER IS BEING HARVESTED/RECYCLED? YES
- WHETHER CHILDREN ARE BEING TAUGHT HOW TO AUDIT THE USE OF WATER AND WHETHER THEY ARE BEING ENCOURAGED TO TAKE IT UP AT HOME? YES
- WHETHER ENVIRONMENTAL LITERACY IS PROMOTED THROUGH SEGREGATION IN ACADEMICS? NO
- WHETHER CONSERVATION OF ENVIRONMENT IS PROMOTED? YES
- TOTAL AMOUNT OF WATER CONSERVED (IN LITRES)? (BY STUDENTS AND TEACHERS) 10000

WHETHER ROOF WATER HARVESTING IS BEING UNDERTAKEN BY THE SCHOOL?	NO
WHETHER SCHOOL ENSURES MAINTENANCE OF ALL WATER FAUCETS/PIPES ETC TO PREVENT ANY LEAKAGES?	YES
WHETHER ORGANIC WASTE IS BEING RECYCLED?	NO
WHETHER SCHOOL IS MAKING EFFORTS TO REDUCE USE OF PAPER BY ADOPTING IT SOLUTIONS?	YES
WHETHER THERE IS A SYSTEM FOR DISPOSAL OF ELECTRONIC WASTE?	NO
WHETHER PLANTATION/GARDENING HAS BEEN DONE IN AND AROUND CAMPUS?	YES
WHETHER SCHOOL IS USING SOLAR ENERGY?	NO
WHETHER SCHOOL IS PROMOTING AWARENESS AMONGST CHILDREN AND PARENTS ON ENVIRONMENTAL CONSERVATION AND CLEANLINESS?	YES
WHETHER CHILDREN ARE TAKING UP WATER AUDITING AT SCHOOL?	NO
WHETHER TREES HAVE BEEN PLANTED BY STUDENTS, IN SCHOOL AT HOME/IN NEIGHBOURHOOD IN THE CURRENT ACADEMIC YEAR?	YES
TOTAL TREES PLANTED? (BY STUDENTS AND TEACHERS)	500
TARGET DATE FOR STOPPING USE OF POLYTHENE	04/10/2019

CHAIRMAN/PRESIDENT'S CORRESPONDENT DETAIL AND SM

**CHAIRMAN/PRESIDENT'S/
CORRESPONDENT NAME**

S Parmjit Sir

**CHAIRMAN/PRESIDENT'S/
CORRESPONDENT NAME**

8219627966

**CHAIRMAN/PRESIDENT'S/
CORRESPONDENT PHONE (OFFICE)**

S Gurmeet

SECRETARY NAME

**WHETHER THE SCHOOL MANAGING COMMITTEE HAS BEEN CONSTITUTED
REQUIREMENTS OF AFFILIATION BYE-LAWS?**

20541--BABA ISHER SINGH(N) PUBLIC SCHOOL AMRI

Dated : 26/06/2021

gh
CHAIRMAN/PRESIDENT'S/ S/o S Mannohan Singh , Ramana chak ,
CORRESPONDENT ADDRESS Amritsar , Dhulka , Punjab

CHAIRMAN/PRESIDENT'S/ 8219627966

CORRESPONDENT PHONE
(RESIDENCE)

Singh
TOTAL MEMBERS 11

IS PER OF Yes

SCHOOL WEBSITE INFORMATION

URL OF SCHOOL WEBSITE

www.babaisherisinghnanaksarpi

SCHOOL MANAGING COMMITTEE INFORMATION

Yes

NORMS FOLLOWED FOR FIXING FEE

Yes

AFFILIATION STATUS (MIDDLE/SECONDARY/SENIOR SECONDARY)

Yes

DETAILS OF TEACHERS INCLUDING QUALIFICATIONS

Yes

THE NUMBER OF STUDENTS CLASS WISE

Yes

ANNUAL REPORT

Yes

POSTAL ADDRESS AND E-MAIL, TELEPHONE NOS. OF SCHOOL AND AUTHORITIES

Yes

PERIOD OF AFFILIATION

Yes

AS PER THE SECTION (2.4.7 (B)) OF AFFILIATION BYE-LAWS, WRITTEN DECLARATION HAVE GONE THROUGH THE CONTENTS OF THE BOOKS PRESCRIBED BY THE SCHOOL ACADEMIC ACHIEVEMENTS; WRITE UP ON ALL EFFORTS MADE IN THE FIELD OF ENVIRONMENTAL ACTIVITIES, IMPORTANT SMC DECISIONS BEEN ADDED IN ANNUAL REPORT, PTA ACTIVITIES, IMPORTANT SMC DECISIONS BEEN ADDED IN ANNUAL REPORT

OTHER VITAL INFORMATION

10th BOARD PASS PERCENTAGE (2014/2015/2016)

63.64/60/73.08

NAME OF WELLNESS/ACTIVITY TEACHER

NO

CONTACT NUMBER OF GRIEVANCE/COMPLAINT REDRESSAL OFFICER

9876145121

NAME OF HEAD OF SEXUAL HARASSMENT COMMITTEE

Ms Meenu Mehra

EMAIL ID OF HEAD OF SEXUAL HARASSMENT COMMITTEE

bisnpss@yahoo.in

CONTACT NUMBER OF CONTACT PERSON IN CASE OF EMERGENCY

9872432623

TOTAL NUMBER OF DOCTORS IN SCHOOL CLINIC

0

TOTAL NUMBER OF BEDS IN SCHOOL CLINIC

2

DO THE TEACHERS GET PROPER GRADE LIKE PGT/TGT AS PER THE CLASSES THEY ARE ENTITLED TO TEACH?

YES

DOES THE SCHOOL HAVE EPF FACILITY FOR STAFF

YES

MODE OF SALARY PAYMENT

bankpayment

ARE THE SCHOOL ACCOUNTS AUDITED REGULARLY?

YES

12th BOARD PASS PERCENTAGE (2014/2015/2016) 50/17.19/100

NAME OF GRIEVANCE/COMPLAINT REDRESSAL OFFICER Principal

EMAIL ID OF GRIEVANCE/COMPLAINT REDRESSAL OFFICER bisnpss@yahoo.in

CONTACT NUMBER OF HEAD OF SEXUAL HARASSMENT COMMITTEE 8146744789

NAME OF CONTACT PERSON IN CASE OF EMERGENCY Ms Charanjit Poply

EMAIL ID OF CONTACT PERSON IN CASE OF EMERGENCY bisnpss@yahoo.in

TOTAL NUMBER OF NURSES IN SCHOOL CLINIC 0

LEVEL OF INVOLVEMENT OF SCHOOL IN CBSE ACTIVITIES ACTIVE

DO THE TEACHERS AND STAFF GET THEIR SALARY WITHIN FIRST WEEK OF THE MONTH? YES

EPF REGISTRATION NUMBER LDASR0017439

NAME OF BANK WITH SALARY ACCOUNT Canara Bank

PARENT TEACHERS ASSOCIATION AS PER NORMS YES

此乃...
...

...

此乃...
...

...

此乃...
...

...

此乃...
...

...

此乃...
...

...

此乃...
...

...

此乃...
...

...

此乃...
...

...

此乃...
...

...

此乃...
...

...

TO WHOM IT MAY CONCERN:

VACATION PERIOD

STATEMENT OF WORK?

STATE STATEMENT OF SCHOOL

STATEMENT OF WORK?

STATEMENT OF WORK?

ACADEMIC CALENDAR OF SCHOOL

STATEMENT OF WORK?

WHETHER SUPPLEMENT GUARDS EMPLOYED FOR SERVICE?

STATEMENT OF SCHOOL

STATEMENT OF WORK?

OTHER INFORMATION

MANDATORY ART EDUCATION FROM CLASS 1 TO 10 -TWO PERIOD A DAY

WHETHER LIST OF PRESCRIBED BOOKS ARE PUBLISHED ON SCHOOL WEBSITE WITH WRITTEN DECLARATION AS PER (SECTION-2.4.7 (B) OF AFFILIATION BYE-LAWS) (http://cbseaff.nic.in/cbse_aff/attachment/onlineservices/affiliation-Bye-Laws.pdf)?

WHETHER ALL GUIDELINES RELATED TO POCSO ACT COMPLIED WITH AS PER (SECTION-14.25 OF AFFILIATION BYE-LAWS) (http://cbseaff.nic.in/cbse_aff/attachment/onlineservices/affiliation-Bye-Laws.pdf)?

WHETHER DISABLED STUDENTS FACILITATED AS PER (SECTION-14.15 OF AFFILIATION BYE-LAWS) (http://cbseaff.nic.in/cbse_aff/attachment/onlineservices/affiliation-Bye-Laws.pdf)?

WHETHER ANNUAL HEALTH CHECK-UP OF STUDENTS DONE AND THEIR RECORD MAINTAINED ?

YES **WHETHER SELECTION OF TEXTBOOKS FOR ALL GRADES ARE AS PER NORMS ((SECTION-2.4.7 (A) OF AFFILIATION BYE-LAWS) (http://cbseaff.nic.in/cbse_aff/attachment/onlineservices/affiliation-Bye-Laws.pdf)?)** YES

YES **WHETHER INFORMATION AS PER PARA (2.4.9 OF AFFILIATION BYE-LAWS) (http://cbseaff.nic.in/cbse_aff/attachment/onlineservices/affiliation-Bye-Laws.pdf) PUBLISHED ON THE SCHOOL WEBSITE ?** YES

YES **WHETHER ANNUAL REPORT CONTAINS INFORMATION AS PER (SECTION-14.5 OF AFFILIATION BYE-LAWS) (http://cbseaff.nic.in/cbse_aff/attachment/onlineservices/affiliation-Bye-Laws.pdf)?** YES

YES **WHETHER IN-SERVICE TRAINING ORGANISED AS PER (SECTION-16 OF AFFILIATION BYE-LAWS) (http://cbseaff.nic.in/cbse_aff/attachment/onlineservices/affiliation-Bye-Laws.pdf)?** YES

YES **NUMBER OF TEACHERS IN SCHOOL WHO DOWNLOADED CBSE SHIKSHA VANI** 23

PEDAGOGICAL PLAN

ADOPTION OF EXPERIENTIAL LEARNING PEDAGOGY -IN WHICH GRADES

NUMBER OF TEACHERS TRAINED ON THE ANNUAL THEME OF CBSE -
EXPERIMENTAL LEARNING AND INNOVATIVE PEDAGOGY

FEE STRUCTURE OF SCHOOL

CLASS	ADMISSION FEE (in Rupees)	TUITION FEE (in Rupees)	YEARLY DEVELOP (in Rupees)
PRIMARY	600	2248	1109
MIDDLE	600	2552	1267
SECONDARY	600	2703	1267
SENIOR SECONDARY	600	4002	3298

I, II, III, IV, V, VI, VII, VIII, IX, X, XI, XII

WHETHER ANNUAL PEDAGOGICAL PLANS
PREPARED, SUBMITTED AND IMPLEMENTATED ?

YES

23

20541-BABA ISHER SINGH(N) PUBLIC SCHOOL AMRITSAR I

MENT CHARGES ANNUAL/MONTHLY OTHER CHARGES FOR OTHER FACILITIES
(In Rupees)

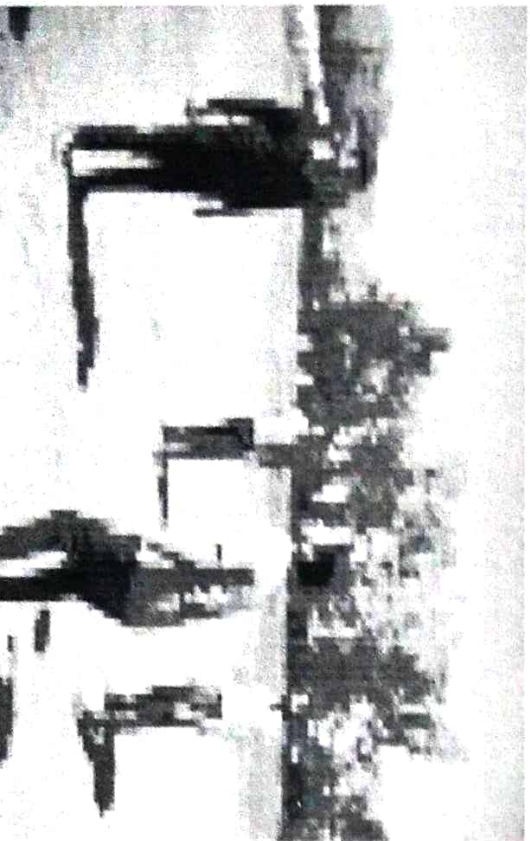
1872
2016
2016
3110

**PHOTO OF SCHOOL
SCHOOL PHOTOS**

GEO-TAGGED PHOTO

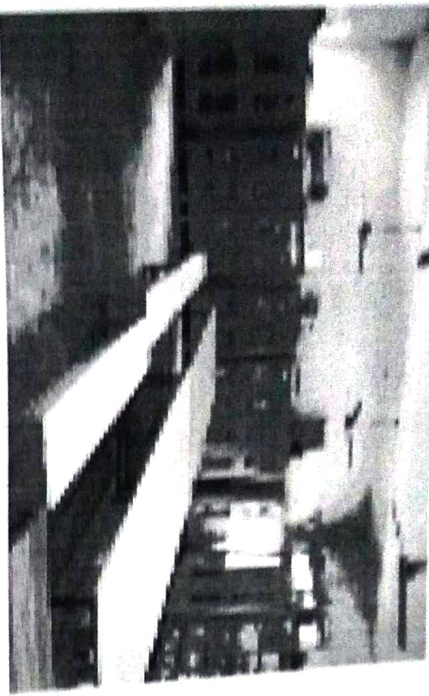


PLAYGROUND PHOTO



20541 - BABA ISHER SINGH(N) PUBLIC SCHOOL AMRITSA
Dated :

LIBRARY PHOTO



SCIENCE LAB PHOTO



VIDEO



CHEMISTRY LAB PHOTO



ADDITIONAL INFORMATION

U-DISE CODE

SCHOOL LOCATED IN RURAL OR URBAN AREA

HABITATION NAME/MOHALLA

VILLAGE NAME (FOR RURAL)/WARD NUMBER (FOR

VILLAGE PANCHAYAT NAME (FOR RURAL)

PIN CODE

CLUSTER RESOURCE CENTER NAME

CD BLOCK MANDAL/TALUKA NAME

EDUCATIONAL ZONE/MANDAL/TALUKA NAME

ASSEMBLY CONSTITUENCY

MUNICIPALITY

20541--BABA ISHER SINGH(N) PUBLIC SCHOOL AMRITSAR PB

Dated : 28/06/2021

03020800510

URBAN

Ranjit Avenue

Ward-5

143001

Kendri Jail

Amritsar

Verka

Amritsar Central

0302001

IS THIS SCHOOL APPROACHABLE BY ALL WEATHER ROAD

IS THIS A SPECIAL SCHOOL FOR CWSN

IS THIS A SHIFT SCHOOL

IS THIS A RESIDENTIAL SCHOOL

TYPE OF RESIDENTIAL SCHOOL

IS THIS A RELIGIOUS MINORITY SCHOOL

TYPE OF RELIGIOUS MINORITY SCHOOL

NUMBER OF ACADEMIC INSPECTIONS DURING LAST ACADEMIC YEAR

NUMBER OF VISITS BY CRC COORDINATOR DURING LAST ACADEMIC YEA

NUMBER OF VISITS BY BLOCK LEVEL OFFICER DURING LAST ACADEMIC

SCHOOL PARTICULARS FOR ELEMENTARY SCHOOLS ONLY

NUMBER OF INSTRUCTIONAL DAYS DURING LAST ACADEMIC YEAR

SCHOOL HOURS FOR CHILDREN PER DAY (CURRENT YEAR)

SCHOOL HOURS FOR TEACHERS PER DAY (CURRENT YEAR)

ARE PUPIL CUMULATIVE RECORDS BEING MAINTAINED?

ARE PUPIL CUMULATIVE RECORDS SHARED WITH PARENTS?

NUMBER OF STUDENTS PROVIDED IN SPECIAL TRAINING (CURRENT

YES

NO

NO

NO

PRIVATE

YES

SIKH

1

2

2

YEAR

20541--BABA ISHER SINGH(N) PUBLIC SCHOOL AMF
Dated : 28/06/2021

YEAR)

NUMBER OF STUDENTS ENROLLED IN SPECIAL TRAINING (PREVIOUS Y

NUMBER OF STUDENTS COMPLETED SPECIAL TRAINING (PREVIOUS YE

HAS SCHOOL MANAGEMENT COMMITTEE (SMC) BEEN CONSTITUTED?

LANGUAGES TAUGHT AT PRIMARY STAGE: MENTION THE NAME OF LAN

IS ANGANWADI CENTRE IN OR ADJACENT TO SCHOOL? OPTIONAL

NUMBER OF MEETINGS HELD BY SMC DURING LAST ACADEMIC YEAR

WHETHER SMC PREPARE THE SCHOOL DEVELOPMENT PLAN

WHETHER SEPARATE BANK ACCOUNT FOR SMC IF YES, PROVIDE THES

BANK NAME

ACCOUNT HOLDER'S NAME

BANK ACCOUNT NUMBER

IFSC CODE

WHEN WAS THE TEXTBOOK RECEIVED FOR CURRENT YEAR?

WHETHER COMPLETE SET OF FREE TEXT BOOKS FOR TEACHERS LEA

WHETHER TLE RECEIVED FOR EACH GRADE?

WHETHER PLAY MATERIAL GAMES AND SPORTS MATERIAL AVAILABL

ARE THE MAJORITY OF PUPILS TAUGHT THROUGH THEIR MOTHER T

SCHOOL PARTICULARS FOR SECONDARY AND HIGHER

NUMBER OF INSTRUCTIONAL DAYS DURING LAST ACADEMIC YEAR

AR)

(R)

LANGUAGE OPTIONAL

YES

DETAILS

TRAINING EQUIPMENT (TILE) RECEIVED?

FOR EACH GRADE?

LANGUAGE AT PRIMARY STAGE? OPTIONAL

SECONDARY SCHOOLS ONLY

20541--BABA ISHER SINGH(N) PUBLIC

Dated : 28/06/2021

237

SCHOOL HOURS FOR CHILDREN PER DAY (CURRENT YEAR)

SCHOOL HOURS FOR TEACHERS PER DAY (CURRENT YEAR)

ARE SCHOOL MANAGEMENT COMMITTEE (SMC) AND SCHOOL MANAGEN

IF NO, UPLOAD DETAILS OF SMDC

PHYSICAL FACILITIES AND EQUIPMENTS

NUMBER OF CLASSROOMS BY CONDITION

PUCCA	PARTIALLY PUCCA
35	0
0	0
0	0

IS LAND AVAILABLE FOR EXPANSION OF SCHOOL ACTIVITIES?

IS SEPARATE ROOM AVAILABLE FOR PRINCIPAL/HEAD TEACHER?

IS SEPARATE ROOM AVAILABLE FOR VICE PRINCIPAL/ASSISTANT HEAD

IS SEPARATE ROOM AVAILABLE FOR CRAFTS/CO CURRICULAR ACTIVITI

IS STAFF QUARTERS AVAILABLE?

IS HAND WASHING FACILITY AVAILABLE NEAR TOILET/URINALS ?

IS ELECTRICITY CONNECTION AVAILABLE?

IS AUDIO/VISUAL/PUBLIC ADDRESS SYSTEM AVAILABLE?

IS LCD PROJECTOR AVAILABLE?

ENT DEVELOPMENT COMMITTEE (SMDC) SAME? YES

[VIEW \(PdfHandler.aspx?\)](#)

FileName=smdc/1630555.pdf

20541--BABA ISHER SINGH(N) PUBLIC SCHOOL AMR

Dated : 30/06/2021

KUCHCHA	TENT
0	0
0	0
0	0

YES

YES

TEACHER?

YES

IS?

YES

NO

YES

YES

YES

YES

NUMBER OF AVAILABLE PRINTERS

SPEED OF AVAILABLE PRINTERS

NUMBER OF PHOTOCOPIERS AVAILABLE

IS LEASE LINE AVAILABLE?

SPEED OF LEASE LINE (IF AVAILABLE)

IS SCANNER AVAILABLE?

IS RAIN WATER HARVESTING IMPLEMENTED?

ENROLLMENT INFORMATION

CATEGORY WISE STUDENTS

CLASS	GEI
PRIMARY	80
MIDDLE	60
SECONDARY	32
SENIOR SECONDARY	27

MINORITY GROUP WISE STUDENTS

CLASS	MUSLIM
PRIMARY	0
MIDDLE	0

1

40-60 PPM

1

YES

1

YES

NO

20541--BABA ISHER SINGH(M) PUBLIC SCHOOL AMRITSAR P
Dated : 30/06/2021

ERAL	SC	ST	OBC	CHRISTIAN	SIKH	JAIN	OTHERS
	32	20	17	9	0	0	0
	10	0	0	2	4	0	0
	5	0	0				
	0	0	0				

SECONDARY 0
SENIOR SECONDARY 0

CHILDREN WITH SPECIAL NEEDS

CLASS	VISUAL IMPAIRMENT	SPEECH IMPAIRMENT	LOCOMOTIVE IMPAIRMENT
1	0	0	0
2	0	0	0
3	0	0	0
4	0	0	0
5	0	0	0
6	0	0	0
7	0	0	0
8	0	0	0
9	0	0	0
10	0	0	0
11	0	0	0
12	0	0	0

MID DAY MEAL INFORMATION (Only for Government and Aided Schools)

STATUS OF KITCHEN SHED (if meal prepared in school)

NO

SPORTS INFORMATION

AEROBICS ATHLETICS BASKETBALL CHESS FOOTBALL H
ARCHERY BADMINTON BOXING CRICKET GYMNASTICS

DOES THE SCHOOL HAVE A MANDATORY SPORTS/GAMES PERIOD FROM (

FACILITY INFORMATION

FACILITY PROVIDED TO PRIMARY STUDENTS

FACILITY

GENERA

FREE TEXT BOOKS

0

FREE UNIFORMS

0

STATE DEFINED INCENTIVES

0

FACILITY PROVIDED TO UPPER PRIMARY STUDENTS

FACILITY

GENER

FREE TEXT BOOKS

0

FREE UNIFORMS

0

STATE DEFINED INCENTIVES

0

FACILITY PROVIDED TO CWSN STUDENTS

AVAILABLE SOURCE OF MDM (if meal not prepared in school)

OTHERS

20541--BABA ISHER SINGH(N) PUBLIC SCHOOL AMRITSAR PB

NDBALL JUDO KHO KHO SWIMMING ^{Dated: 29/06/2021} TABLE TENNIS VOLLEYBALL

OCKEY KABADDI SHOOTING TAEKWONDO TENNIS YOGA

LASS 1 TO 12 EVERY DAY ? YES

20541--BABA ISHER SINGH(N) PUBLIC SCHOOL AMRITSAR
Dated : 29/06/2021

	SC	ST	OBC	MUSLIM MINORITY
	0	0	0	0
	0	0	0	0
	0	0	0	0
	0	0	0	0
IL	SC	ST	OBC	MUSLIM MINORITY
	0	0	0	0
	0	0	0	0
	0	0	0	0